

The University of Arizona HealthCare Partnership Tobacco Dependence Treatment Continuing Education Programs Enabling Resources *for Native Communities*

Smoking Checklist



Basic Tobacco Intervention Skills for Native Communities



Self-Management Trifold



Smokeless Tobacco Self-Management Trifold



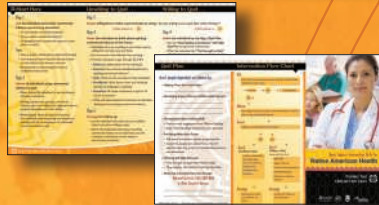
Strength to Quit Pocket Guide



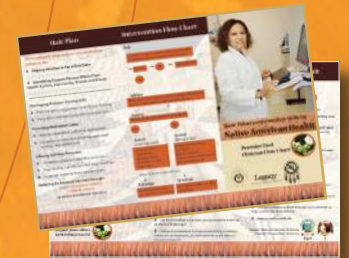
Smokeless Tobacco Pocket Guide



Provider Tool



Smokeless Tobacco Provider Tool



to order resources:

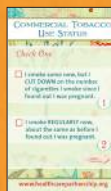
www.nativeamericanprograms.org

www.healthcarepartnership.org/IHS

IHS Fieldbook



Commercial Tobacco Use Survey



Maternal & Child Health Companion Guide



Table Tents



Speaker's Kit



Tobacco Dependence Reimbursement Guide



Lifesaver Flyer



Posters



How to order FREE materials from Native CIRCLE

Step 1

Go to www.nativeamericanprograms.org

Step 2

Click on “**Orders**” on the lower left side of page

Step 3

On this page there are 3 choices:

- People who have ordered products/materials before (survey required)
- People who are ordering products/materials for the first time
- People who have ordered products/materials before and would like to help with the survey (without ordering)

Step 4

If you are ordering for the first time, select **choice #2**.

There are two very short survey questions.

Once those are complete, you will be taken directly to the Native Circle Catalog page.

Product categories are listed alphabetically; tobacco cessation resources are listed as item #19:
“**Smoking and Smoking Cessation - Native Specific**”

Step 5

The **Basic Skills** materials are included among a large list of other materials.

Titles to look for:

- Basic Tobacco Intervention Skills of Native American Health: Provider Tool/Clinician Flow Chart (trifold brochure, Indian Health Service, 2009)
- Stay Healthy - Life Matters: Tips and Tools to Help You Quit Commercial Tobacco: Respect Your Culture, Keep Tobacco Sacred. (Indian Health Service, 2009)
- The Strength to Quit (Tobacco pocket guide. Indian Health Service, 2009)
- Smoking Kills People We Love (table-tent, Indian Health Service, 2009)
- Implementing Tobacco Control into the Primary Healthcare Setting (tobacco fieldbook and other resources CD, IHS, 2009)

Other Steps

If you have ordered products before, select choice #1.

NOTE: There is an optional 20 minute survey associated with choice #1. If you do not fill out the survey, you can still order materials, but according to the website “Native CIRCLE is prioritizing requests for free materials based on collaborative, supportive relationships. Thus, we will first fill the orders of programs who help us by completing the survey.”

If all else fails, contact:

Lisa A. Baethke, Program Coordinator	
Native CIRCLE, Mayo Clinic	Email: nativecircle@mayo.edu
200 First Street SW	Toll Free: 877-372-1617
Rochester, MN 55905	Fax: 507-266-2478